

XPM-MF-W

XPRO RANGE - MULLION 13.56 MHz RFID READER - WIEGAND

The mullion RFID reader is compatible with the PROS CS client server software and EWS controllers.

It can read 13.56 MHz credentials and communicate with standard Wiegand protocol.

The configuration and the firmware update can be done using our PROS CS software via the USB-C input on the back of the reader or with a programming card.

The XPM products are coming with the Xsecure® key, but only products ending in -X are coming with the Xsecure® configuration by default to ensure data protection.



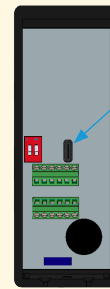
FEATURES

- Mounting: Surface mount
- Housing: Polycarbonate copolymer (UL94)
- Internal buzzer: With adjustable intensity using software
- Communication: Wiegand
- Reading range: Up to 9 cm, depending on the tag type and size
- Operating frequency: 13.56 MHz
- Tamper protection: Yes
- Wiring: Terminal block
- Operating voltage: 9 - 15 V DC
- Max. consumption at 12 V DC: 100 mA
- Supported Credentials: Xsecure®, Mifare CSN (Classic, DESfire, Plus, Ultra-light), Mifare DESfire (EV1, EV2, EV3)

ENVIRONMENTAL FEATURES

- Environmental rating: Indoor/ Outdoor IP65 (resin potted)
- Operating temperature: -30°C to +70°C
- Operating humidity: 0% to 95% RH (non-condensing)
- Impact protection rating: IK 11

CONNECTIVITY



USB-C: For configuration and firmware update

Wire terminals

- Power
- RS-485
- Wiegand D0, D1
- LED, Buzzer control
- Tamper

LED



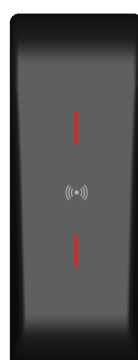
Green LED

Access granted



Blue LED

Idle mode

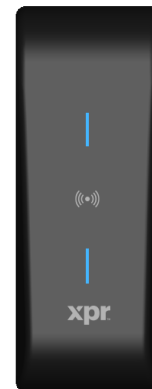


Red LED

Access denied

DIMENSIONS & WEIGHT

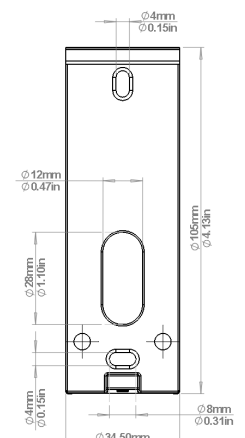
113 mm



42 mm

Housing

27 mm



Back plate



~0.10 kg

SOFTWARE & INTERFACE

Client server software

Web page
www.xprgroup.com

CLIENT PROS CS SERVER

PROS CS is client server software for the Network Access Control System that enables multiple clients to connect to a system either locally or from anywhere on the Internet.

Ideal to control an unlimited number of doors, users, access levels and floors in any business, office or building.

It is also compatible with different video surveillance systems, allowing you to control what is occurring in real time in each area selected.

VARIANTS

References	Functions and credentials			Firmware Upgrades/Programming	
	13.56 MHz CSN (ISO 14443-A (MIFARE®), ISO 15693, HID® iClass, NFC®)	Custom Encryption DESFire® EV1, EV2 & EV3	Mobile ID	USB-C	Default Credential
XPM-MF-W	V	V	X	V	Mifare CSN
XPM-MF-W -X	V	V	X	V	Xsecure®

ACCESSORIES



PROX-USB-X

RFID USB desktop device.
RFID configurable R/W reader with keyboard emulation (Windows, MAC, Linux).
It reads Mifare classic, Mifare DESfire, NFC, ISO 15693 and Xsecure® cards.



Mifare Fobs & Cards

Different contactless fobs and cards:

- Mifare available with 1 KB and 4 KB memory.
- Mifare DESfire EV3 available with 2 K memory.
- Xsecure® Mifare DESfire EV3 available with 2 K memory.

Available in different types of support:
ISO cards and ABS key fobs.

Xsecure®

The Xsecure® solution is based on the concept of writing the identifier as **data on pre-coded MIFARE® DESFire® EV3 13.56 MHz cards and fobs**.

Xsecure® enables each card access key to be **distinct and unique**, produced through **an irreversible diversification process**. As a result, the data on **the card is encrypted and sealed** again, with an error checking against spoofing.

Only the reader and the production card encoding system are aware of this operation.

XPR encodes the cards and validates the identifiers issued **to avoid duplication**.