

MTT

SENSITIVE PUSH BUTTON

MTT is a request-to-exit switch. It can work independently (standalone), or be connected via a controller to provide exit from a secured area (Push Button Input). With its slim look and moulded aluminium body, the MTT combines elegance and aesthetics with ruggedness and reliability. The housing is available in black ABS too.

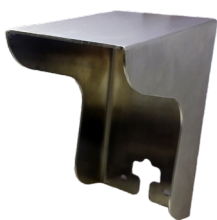
FEATURES

- Feather light touch control
- Works in Pulse and Latch mode
- Compatible with wide range of products
- Vandal-resistant
- Resin Potted Electronics
- Front dual light indication
- Configurable internal or external light indication control
- Buzzer sound on every touch
- Built-in tamper

APPLICATIONS

Light switch
Exit button (Access control)
Elevator button
Industrial panel

ACCESSORIES

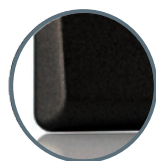


MC MINI
Protection cover in A304 brushed steel for single Mini range reader.

VERSIONS



MTT
Silver - Metal



MTTBK
Black - ABS



MTTS ARROW



MTTS EXIT

bx Black Edition

Products available in Black ABS

SPECIFICATIONS

Power supply:	12-24 V DC; 15-24 V AC;
Current consumption:	65 mA max.
Relay Output:	2 A at 24 V DC / 120 V AC
Inputs:	2 inputs for external control of the light.
Indicators-LED:	Red and Green, behavior configurable by DIP switch
Operating Temperature:	-20° to +50°C
Operating Humidity:	0-95% (non-condensing)
Housing:	Moulded Aluminium alloy housing Available in Black ABS
Touch Plate:	Stainless steel
Protection:	IP65

DIMENSIONS

